



Bringing you **DINOSAUR EGGS, NESTS AND YOUNG**

Our touring dinosaur eggs and babies exhibitions began small, but they have grown with the help of museums like the Harvard Museum of Natural History, together with the input of key paleontologists including Philip Currie and Robert Bakker. Today, "Hatching the Past" has become a world class exhibition.

- The dots indicate where *Hatching the Past* has been featured throughout the U.S, Mexico, Australia, and New Zealand



Artwork by Luis Rey. A variety of his work appears frequently in the Exhibition.

All of our exhibits include :

- An excellent collection of eggs, nests and young representing 6 major groups of dinosaurs
- Hands-on exploration stations for assembling a bone and uncovering dinosaur eggs buried in rubber "sand"
- Video presentations featuring paleontologists including Robert Bakker, Philip Currie, Mark Norell, and others
- Framed photographs by National Geographic photographer and Oscar winner Louie Psihoyos
- Large stunning illustrations of dinosaur family life by Luis V. Rey and Mark Hallett
- "Life-like" models of embryos, hatchlings and young by well known paleo-sculptors
- Reading area with bookshelf, books and egg shaped chairs
- Large informative scientific discovery panels
- Real dinosaur leg bone for touching
- Animated computer games
- Education, design and press packages
- "Turn Key" with our professional installation technicians

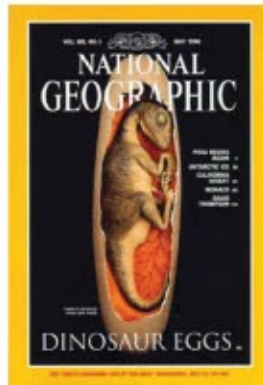
Shipping: one truck load or one sea lab container
Size: 800 to 7,000 sq ft
 Target market: families - schools - children of all ages

“ Hatching the Past was one of the most popular exhibitions we've had at our museum. Years later, folks are still asking when we're going to bring the dinosaur eggs back! ”

Janis C. Sacco, Director of Exhibitions
Harvard Museum of Natural History, Cambridge, Massachusetts

Hatching
the Past

THE GREAT DINOSAUR EGG HUNT



Photograph by Louie Psihoyos

Exhibit size 4000-7000 square feet

In May 1996, Charlie and Florence Magovern were featured in National Geographic Magazine for Charlie's important discovery, the articulated embryo of a giant oviraptor dinosaur "Baby Louie." Not long after the article, the Magoverns began touring "Hatching the Past."

The Great Dinosaur Egg Hunt includes :

- Over 100 amazing authentic dinosaur eggs from around the globe. Some were first seen in May 1996 National Geographic Magazine.
- Authentic dinosaur embryo skin displayed under magnification
- High quality cast eggs and nests for active hands-on learning
- 8 foot diameter cast nest for touching
- Flock of cast Psittacosaur skeletons
- Cast nesting oviraptor (see below)



Bruce Museum, Greenwich, Connecticut



- Cast *Protoceratops* skeletons (see below)
- Bilingual signage includes large informative scientific panels
- ALL NEW - Large play area with two dinosaur nests, costumes, fabric eggs and eight foot tall background mural
- ALL NEW - Petting zoo with five baby dinosaurs in period correct habitats and eight foot tall background mural depicting five life-size parent dinosaurs



Planetario Alfa, Monterrey, Mexico





Don Harrington Discovery Center, Amarillo, Texas

ALL-NEW

HANDS ON ACTIVITIES

Photography Encouraged



NESTING AREA

Full scale nesting dinosaur play area includes :

- Oviraptor and Titanosaur nests with fabric eggs
- New Murals by graphic artist, Luis Rey, depicting the prehistoric nesting grounds of Patagonia and Mongc

with COSTUMES

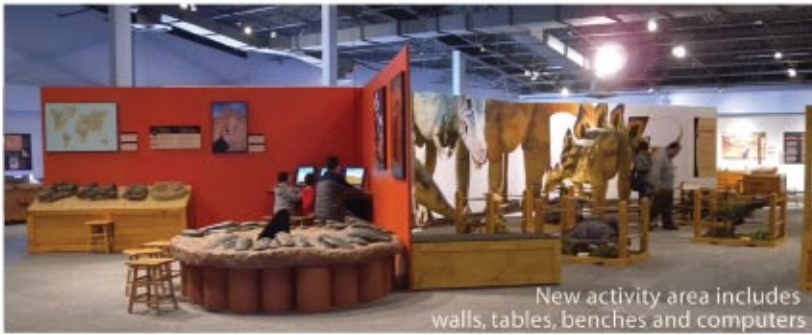
- Dress up like an Oviraptor or a Titanosaur
- Children and adult sizes make it fun for everyone!



DINO BONE PUZZLE

- Assemble a leg bone in its protective field jacket





New activity area includes walls, tables, benches and computers

HATCHLING READING CORNER

- Egg shaped chairs to sit while reading about Dinosaurs. Selection of books including the latest children's book by Robert T. Bakker and Luis Rey

COMPUTER GAMES

- Eight educational computer games including :
Dino Word Search, Paint Shop, and Fossil Hangman

PETTING ZOO

- Feel five baby dinosaurs in period correct habitats
- New mural backdrops by Luis Rey, depicting the five parent dinosaurs in life size proportions





SCHOOL CLASS with **ACTIVITY SHEET**

Educator packet with current science standards



OPEN DISPLAY CASES FOR TOUCHING

Showing high quality cast eggs, nests and models for hands-on learning



REAL FOSSIL LEG BONE for **TOUCHING**

"There is something for every age group and every proficiency level in this exhibit. The scholarship is deep as is the educational value. We were proud to have this exceptional exhibit at our science center."

Jan McKay
Executive Director
Gulf Coast Exploreum
Science Center
Mobile, Alabama



DINOSAUR PLAY LAND

Pretend you are in the Jurassic with two dinosaurs that lived happily together, *Apatosaurus* and *Stegosaurus*.



DIG PITS with **DINOSAUR EGGS TO FIND**

Four dig pits with different groups of eggs to uncover



HATCH FROM AN EGG

Contact us
Curator@hatchingthepast.com
www.hatchingthepast.com Office: (303) 581-0670

